

Installation Instructions for WPO2 Series "No Wiggle" Wall Pullout Organizer

hardware
resources[®]

Important:

Before you begin, make sure you familiarize yourself with all of the parts and fully read the instructions.

Customer Service:

A toll-free customer help line is available weekdays between 7:00 am and 6:00 pm Central Time at 800-463-0660.

Tools Needed:

Screw gun or Phillips screwdriver and tape measure.

NOTE: If screw gun has a clutch, set to lowest setting so as to not over tighten and/or strip screws.

Parts Identification:

A (1 pc.)
"No Wiggle"
Wall Pullout
Organizer Unit

B (1 pc.)
Base Runner
Mechanism

C (1 pc.)
Rear Support
Bracket

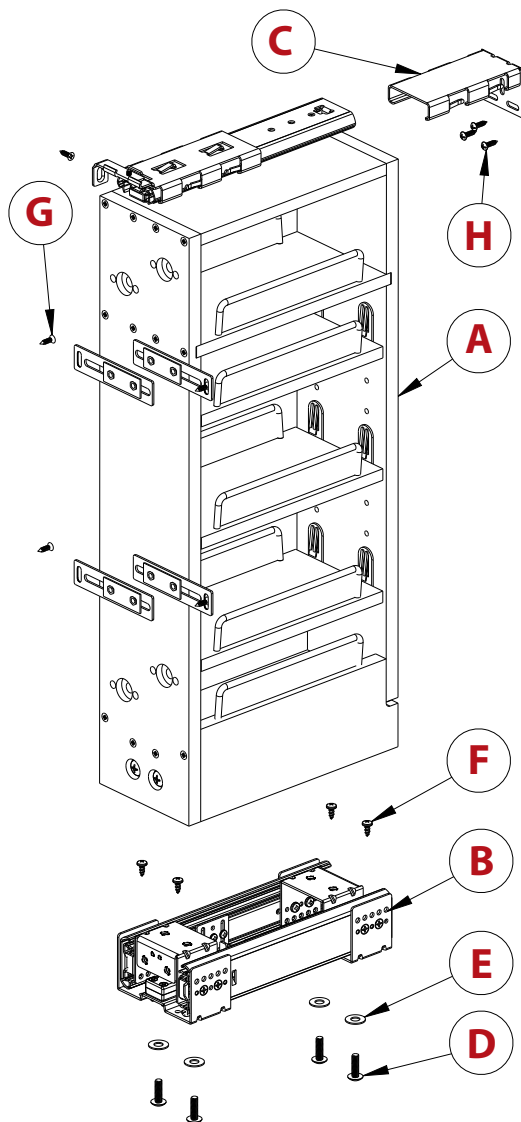
D (4 pcs.)
#1/4-20 Truss
Head Machine
Screws

E (4 pcs.)
#1/4 Washer

F (4 pcs.)
#10 x 1/2 Pan
Head Phillips
Wood Screw

G (5 pcs.)
#8 x 5/8" Flat
Head Phillips
Wood Screw

H (3 pcs.)
#8 x 5/8" Pan
Head Phillips
Wood Screw

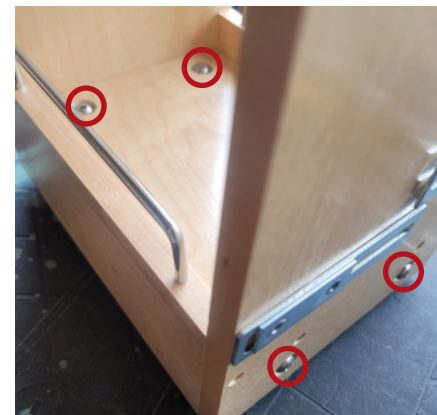


To watch the WPO2 installation video, scan the QR code or visit the link below:

<https://delivr.com/2zu57>

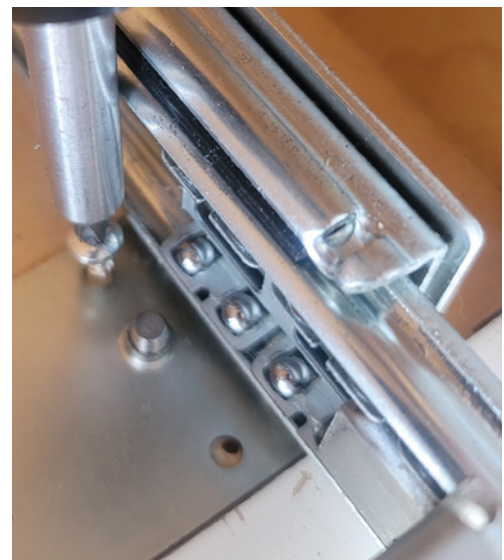


Step 1: Prepare Organizer for Installation



Remove the Organizer from Slide Base by releasing the four (4) pre-installed screws. Keep these screws in a safe place for later use.

Step 2: Slide Base Installation

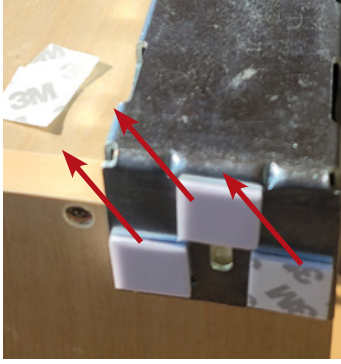


Install the slide base from the inside of the wall cabinet's base panel with the #10 wood screws.

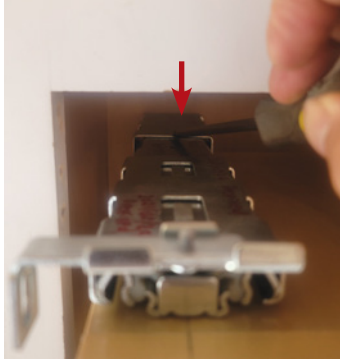
After installation, pull out the slide base upper portion to test and ensure smooth operation.

Step 3: Mark Rear Mounting Bracket

Peel off the cover of the double-sided tape



Apply inward force with a tool

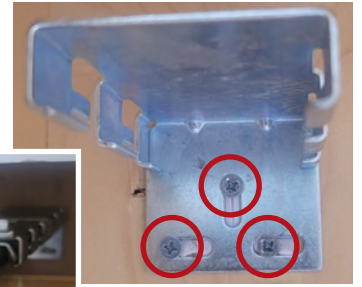


Peel off the double-sided tape on the rear bracket, and temporarily secure Organizer to the Slide Base with two (2) 5/16 machine screws.

Then, slide the Organizer back into the cabinet. Use a tool to apply inward pressure onto the rear bracket. So, the rear bracket will firmly attach to the rear panel of the wall cabinet.

Next, slowly pullout the Organizer and remove it from the Slide Base.

Step 4: Install Rear Mounting Bracket



After removing the organizer from the slide base, the rear L-Bracket is firmly attached to the back panel.

Use three (3) #8 x 5/8" Pan Head Wood Screws to secure the rear L-Bracket to cabinet's back panel.

Then, place the organizer back onto the slide base and secure with the screws from Step 1, ensuring the top slide mechanism engages with the rear L-Bracket. Operate the unit to make sure the slides are working properly.

Step 5: Install Front Mounting Bracket



Loosen the screw to adjust L-Bracket position

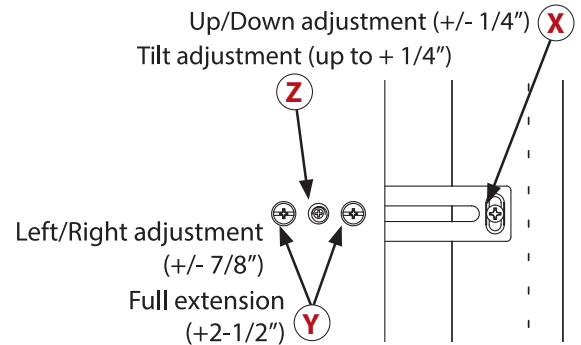
Tighten L-Bracket to face frame then re-tighten the screw from above



Loosen the 8-32 machine screw on the L-Bracket to adjust its position until it abuts to the face frame. Then, tighten the L-Bracket to the face frame with #8 wood screw.

Next, re-tighten the 8-32 machine screw. Remember, both screws must be tightened for the unit to perform properly.

Step 6: Door Installation



Using a tape measure, determine the mounting location of the top door mounting brackets. Install the door with two (2) #8 X 5/8" Flat Head Phillips Wood Screws and make necessary adjustments following the diagram above.

To adjust the door up or down, loosen door mounting screws (X). To adjust left or right, loosen both set screws (Y), adjust and re-tighten. To adjust tilt, loosen tilt screw (Z), adjust and re-tighten set screws.

Once the door is in the desired position, firmly secure the two bottom door mounting screws.

Step 7: Finishing Touch

Cycle the Organizer to ensure smooth operation, and enjoy.