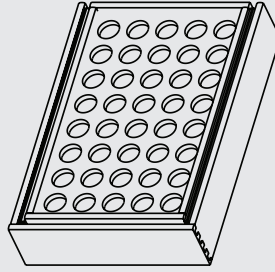


## Installation Instructions (All Unit Sizes)

# KNCD

## Double Coffee Drawer



hardware  
**resources**®

Scan QR or visit link to  
view installation video:

<https://delivr.com/2r2j4>



### **IMPORTANT:**

Before you begin, familiarize yourself with all of the parts and fully read the instructions.

The double coffee pod drawer replaces most standard existing drawers, but be sure to verify your measurements before installation.

Recommended for use with 21" undermount slides. The double coffee pod drawer comes notched and drilled to accept most undermount slides. Slides, mounting brackets, and clips are not provided, so you will need to reuse the existing drawer slides or purchase separately. The drawer front and decorative hardware are also not included.

### **CUSTOMER SERVICE:**

Toll-free customer help line available weekdays from 7:00 am to 6:00 pm Central Time at 800-463-0660.

### **PARTS:**

Pre-assembled drawer

2 - support boards

12 - #8 x 1/2" pan head screws (KNCD15)

24 - #8 x 1/2" pan head screws (KNCD21)

### **TOOLS NEEDED:**

Screw gun\* or phillips screwdriver

Pencil

Measuring tape or ruler (optional)

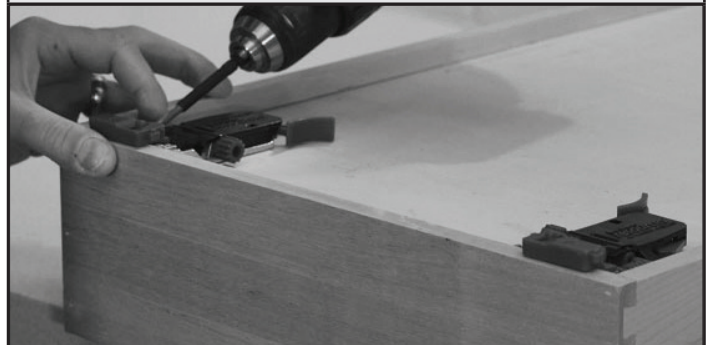
\*NOTE: If screw gun has a clutch, set to lowest setting so as not to over tighten and/or strip screws.

#### **1. Remove the existing cabinet drawer**



Remove the existing drawer, keeping the drawer front and any decorative hardware to reuse in Step 6.

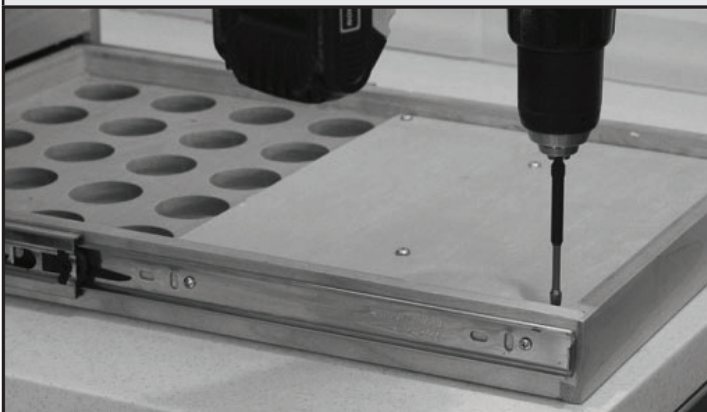
#### **2. Install clips onto the double drawer unit**



Remove the undermount clips from the old drawer, and install them onto the double coffee drawer bottom. New clips are sold separately, if needed.

Proceed to step 3 if using the Nespresso® Original pods support board, if not skip to step 4.

#### **3. Install support board for Nespresso® Original pods**



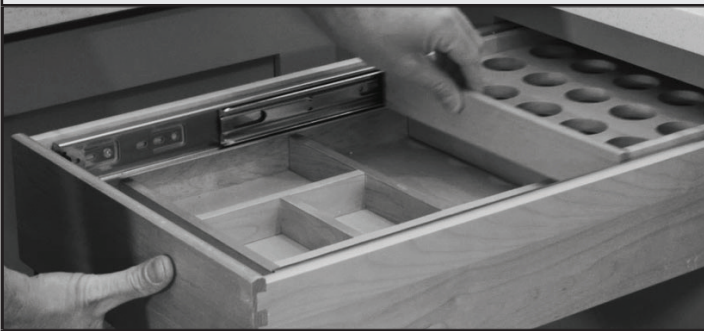
Slide the upper shelf rearward and turn upside down. Position one or both support boards as shown, and secure with the #8 x 1/2" pan head screws provided.

#### 4. Install the double drawer unit into the cabinet



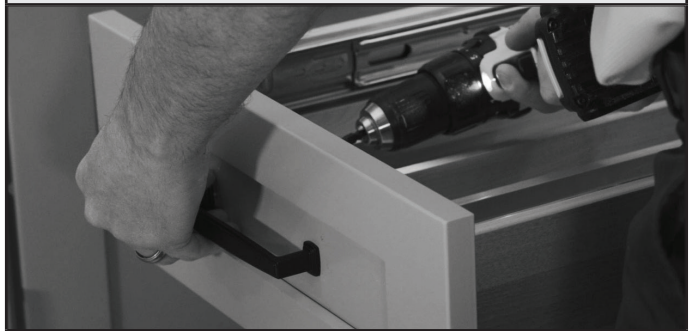
Using existing slides installed in cabinet, pull out the drawer members of both undermount slides, and place the double drawer unit onto the slides and push the drawer closed, making sure the drawer clips fully engage. (Slides sold separately)

#### 5. Cycle the drawer



Open and close the drawer to ensure proper operation.

#### 6. Install the drawer front



Install the drawer front and decorative hardware onto the double drawer unit.