

Scan to watch the installation video  
<http://delivr.com/285UG>



# Plastic Pie-Cut Lazy Susans

## Installation Instructions for the PLSP Series



### IMPORTANT:

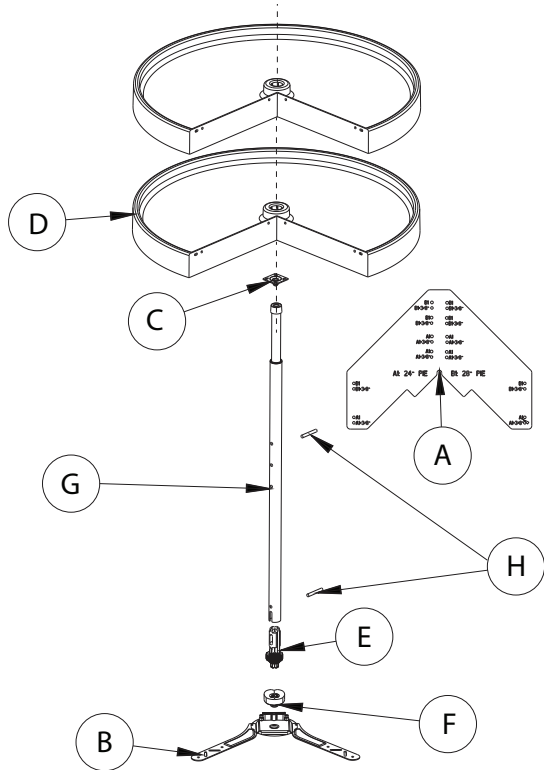
Before you begin, make sure you familiarize yourself with all the parts and fully read the instructions.

### CUSTOMER SERVICE:

Toll free customer help line available weekdays between 7:00am and 6:00pm Central Time at 800-463-0660.

### TOOLS NECESSARY:

Screw gun or Phillips screwdriver. NOTE: If screw gun has a clutch, set to lowest setting so as not to over tighten and/or strip screws.

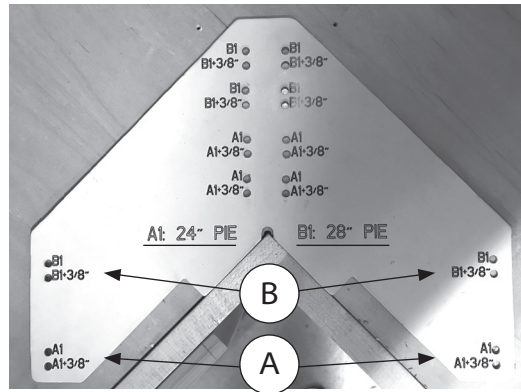


A	Template	1X
B	Lower Mounting Bracket	1X
C	Top Mounting Plate	1X
D	Plastic Pie-Cut Shelf	2X
E	Height Adjustor	1X
F	Positive Stop	1X
G	Telescopic Twist-Lock Pole	1X
H	Shelf Pin	2X
I	#8 x 1/2" Pan Head Phillips Wood Screw	14X

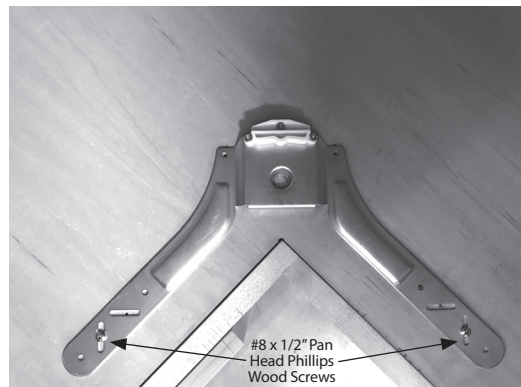
## STEP 1

### Install Upper and Lower Mounting Brackets

#### Lower Mounting Bracket

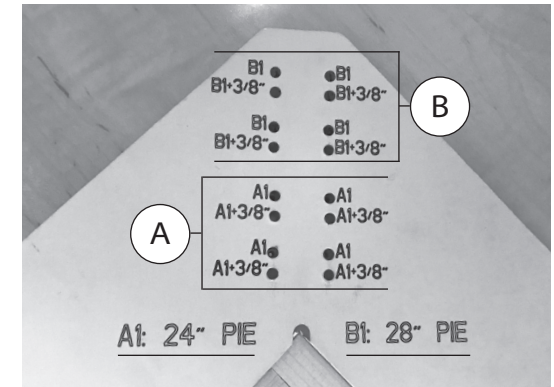


Mark layout for lower mounting support by placing the template on the bottom cabinet surface tight against the back of the face frame (for frameless cabinets, set the template back 3/4"). Follow the template for the appropriate size lazy susan and mark mounting locations A and B shown above.

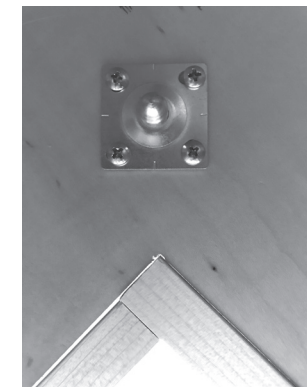


Place the Bottom Shelf Support on the lower marks and secure with two (2) - #8 x 1/2" Pan Head Phillips Wood Screws to the bottom of the cabinet as shown.

#### Upper Mounting Bracket

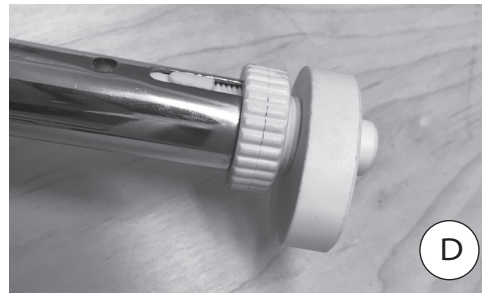
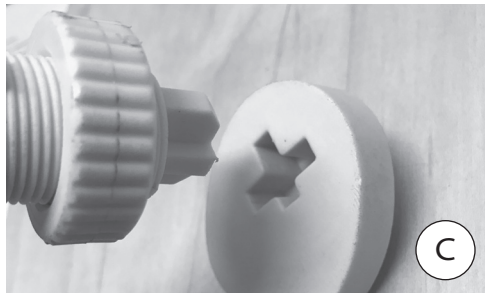
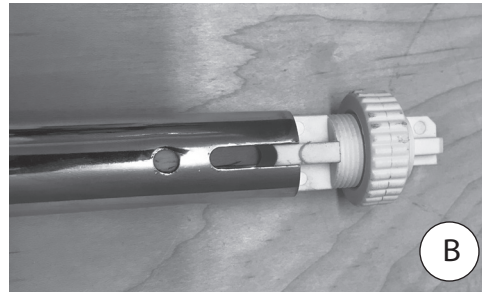
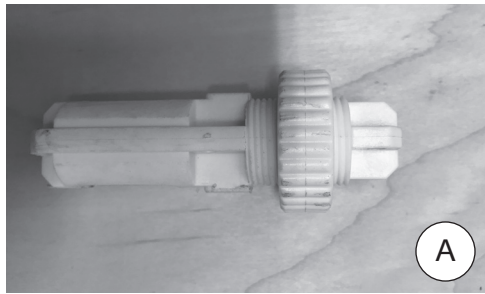


Using the template, in the same way mark the mounting location for the Top Mounting Plate.



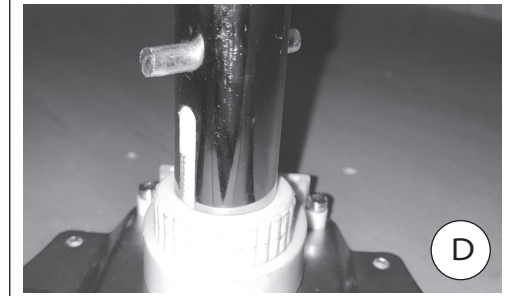
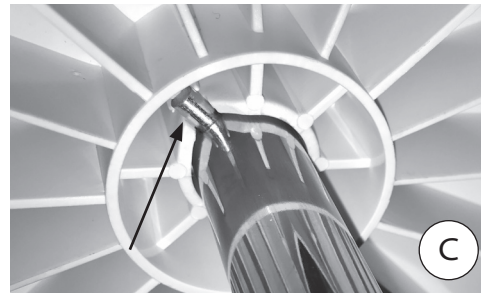
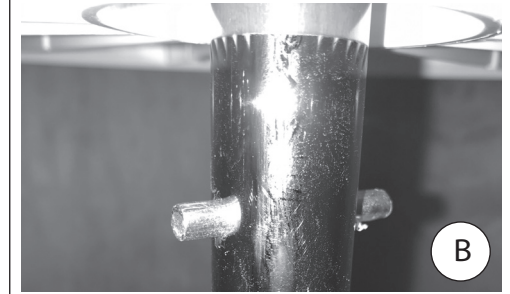
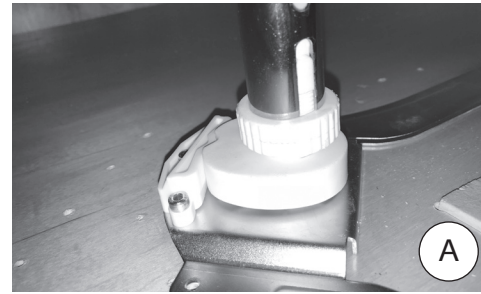
Install with four (4) - #8 x 1/2" Pan Head Phillips Wood Screws.

## STEP 2 - Pole Assembly



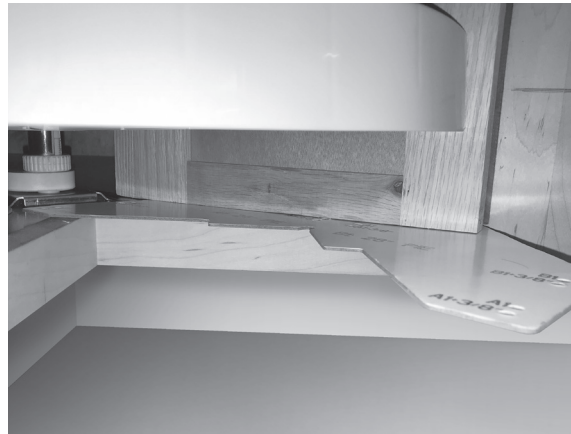
**(A)** Adjust the nut on the height adjuster so that about 1/8" of the threads are showing below the nut. **(B)** Insert the height adjuster into the end of the pole as shown, making sure that the guides line up with the slots in the pole. **(C & D)** Then insert the height adjuster into the positive stop as shown.

## STEP 3 - Shelf and Pole Assembly



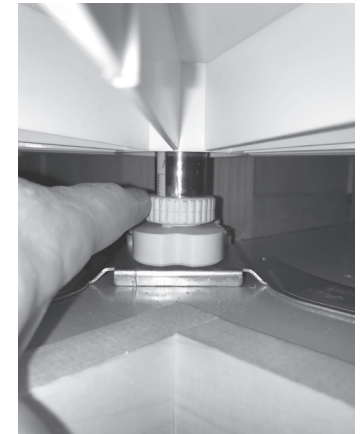
Slide the top of the pole through both shelves. Work the pole and shelf assembly into the cabinet. **(A)** Place the positive stop in the center hole of the Lower Mounting Bracket and extend the twist-n-lock pole until it is secure against the Top Mounting Bracket. Secure pole by twisting clockwise to tighten. **(B)** Lift the top shelf to desired height and slide one pin through the hole in the pole as shown. **(C)** Slide the shelf down the pole making sure the pin slips into the alignment slots as shown. **(D)** Repeat with lower shelf making sure that the pin goes through the pole adjuster as shown.

## STEP 4 - Door Installation



**NOTE: #8 X 1/2" LONG PAN HEAD WOOD SCREWS ARE PROVIDED FOR DOOR INSTALLATION. MAKE SURE THIS LENGTH IS CORRECT FOR YOUR DOOR THICKNESS BEFORE USING THESE SCREWS.** Turn the shelves 1/8 turn. Work the door into the cabinet and place into the pie-cut corner. Place the template between the bottom of the door and the face frame and secure the door with one (1) screw in each shelf. Carefully work the pie-cut around to be able to access the back of the other side of the door. Again, place template between door and face frame and making sure the door is tight to the corner of the plastic pie cut, secure door with one (1) screw in each shelf.

## STEP 5 - Door Adjustment



Adjust door left and right by sliding the top or bottom plate in the necessary direction. Adjust the height by turning the adjustment wheel either up or down as necessary.